

ARCHITECTURE FOR  
**MIGRATION**

Enrique Andrade

**My thesis project proposes a new type of migrant housing that shares programmatic elements and architectural infrastructure within a city. The typology creates opportunities for interaction between migrants and neighboring communities and considers the yearly movement of migrant agricultural workers in the US becoming applicable to other urban conditions.**

topic



Parents Andrade - 1988

topic



image shared by Danny



Danny migrant worker

topic



Contract worker Mikki Andrade in Washington

Search [Advanced Search](#)



# BRACERO HISTORY ARCHIVE

The *Bracero History Archive* collects and makes available the oral histories and artifacts pertaining to the Bracero program, a guest worker initiative that spanned the years 1942-1964. Millions of Mexican agricultural workers crossed the border under the program to work in more than half of the states in America.

Browse the Archive

Español



Archive Teaching History Resources About Partners

Bracero History Archive is a project of the [Roy Rosenzweig Center for History and New Media](#), [George Mason University](#), the [Smithsonian National Museum of American History](#), [Brown University](#), and [The Institute of Oral History at the University of Texas at El Paso](#). Funding provided by the National Endowment for the Humanities.

© 2020, Center for History and New Media

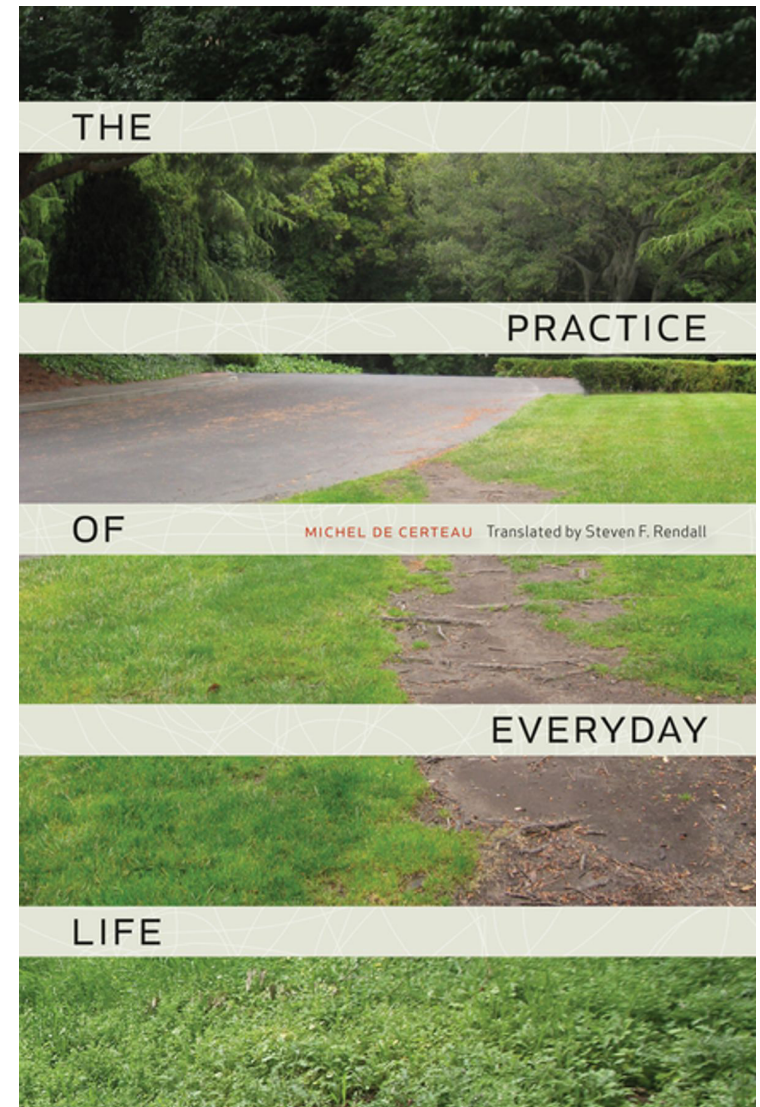
<http://braceroarchive.org>

discursive

Michel de Certeau  
The Practice of Everyday Life

“...strategies are able to produce, tabulate , and impose these spaces,  
when those operations take place, whereas tactics can only use,  
manipulate, and divert these spaces.”  
pg. 30

“First, if it is true that a spatial order organizes an ensemble of  
possibilities (e.g., by a place in which one can move) and interdictions  
(e.g., by a wall that prevents one from going further), then the walker  
actualizes some of these possibilities.”  
pg. 98



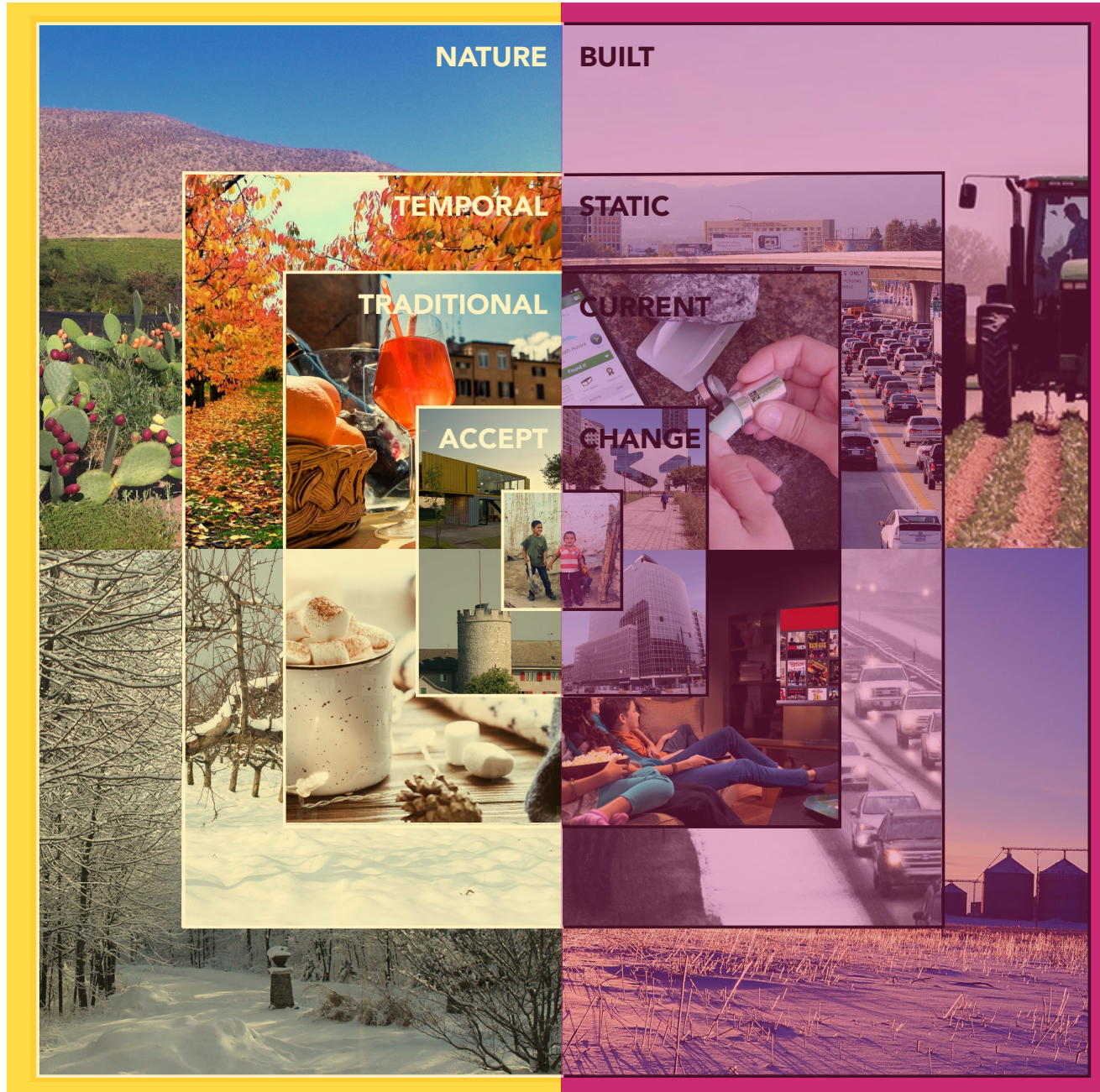
Certeau, Michel de. *The Practice of Everyday Life*. Berkeley and Los Angeles, California: University of California Press, 1988.

Enrique  
Andrade

discursive

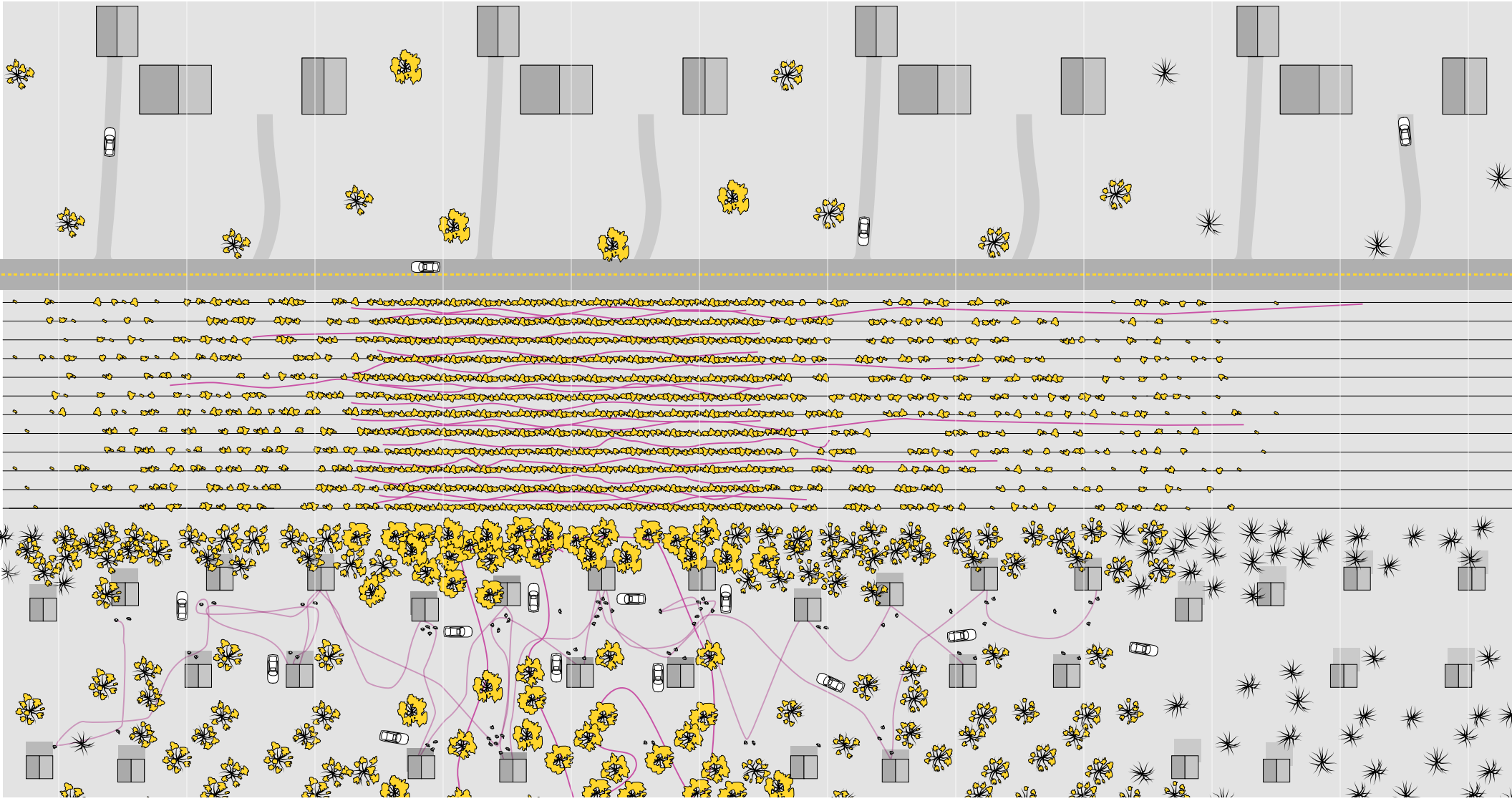
# TACTIC

# STRATEGIES





site development



site development



# precedents

## Quinta Monroy Elemental



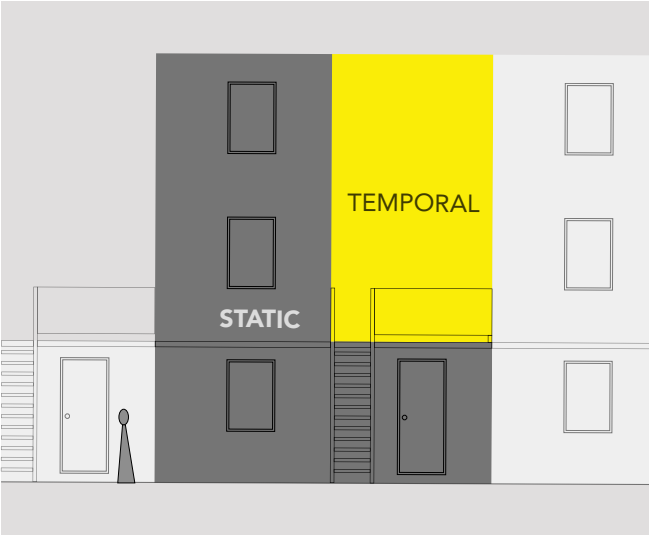
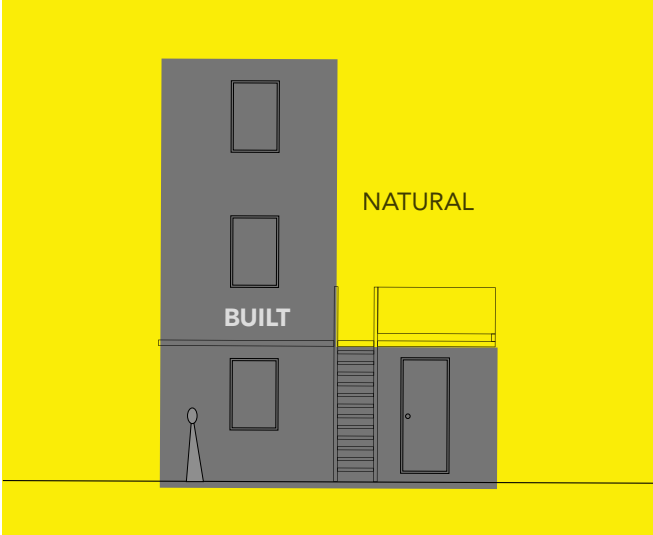
retrieved from <http://www.elementalchile.cl/en/>



retrieved from <http://www.elementalchile.cl/en/>

precedents

**Quinta Monroy**  
Elemental



# precedents

## Playground Zaahof

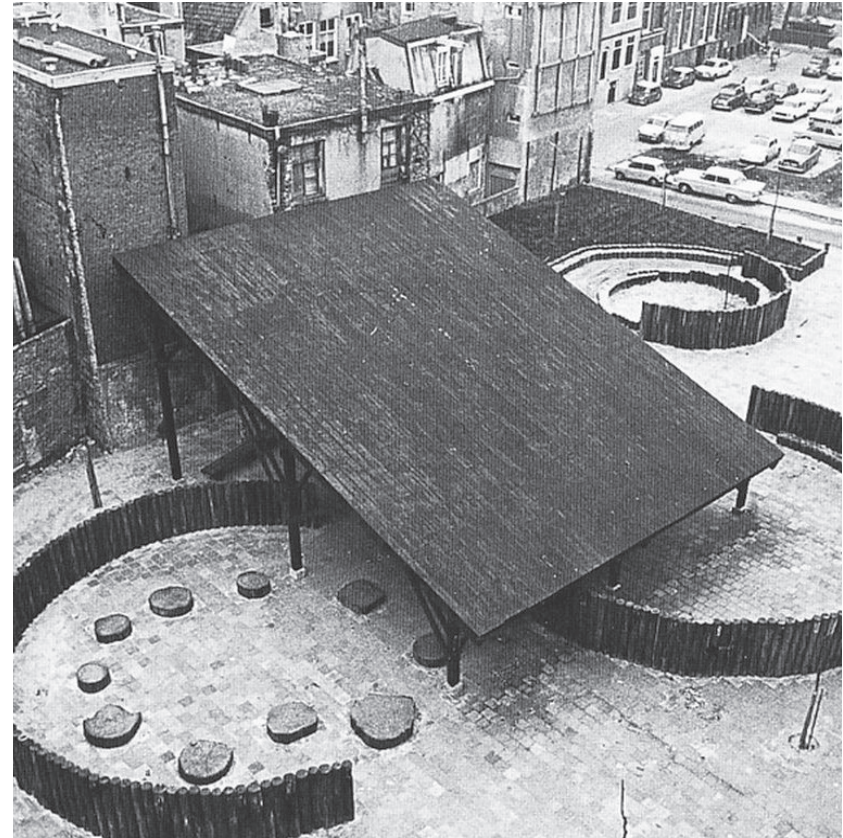
Aldo van Eyck



<https://jsah.ucpress.edu/content/73/2/226.figures-only>

## Playground Nieuwmarkt,

Aldo van Eyck

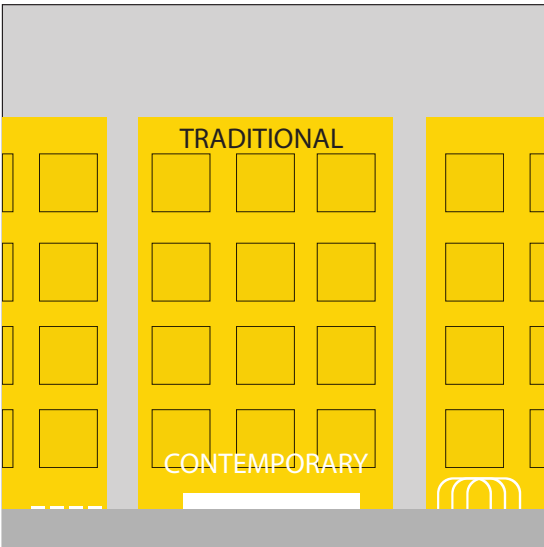
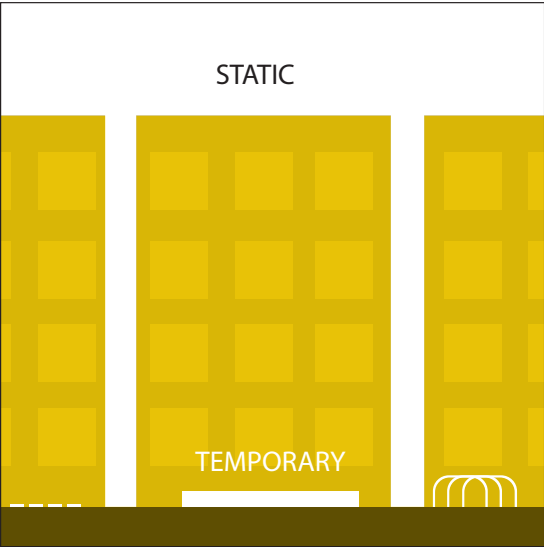


<https://ilovetheorytoo.wordpress.com/2018/03/12/9/#jp-carousel-20>

precedents

**Playground Zaahof**

Aldo van Eyck



social/cultural/historical context

Migrant Labor Housing in Michigan

Metric	2014	2015	2016	2017	2018
<b>Applications</b>					
Not Opening	50	76	43	200	77
Opening	784	798	833	853	871
<b>Inspections</b>					
Licensing	971	1,014	1,136	1,132	1,110
H2A	88	157	305	608	752
CAP-Follow up	108	357	480	558	510
Occupancy	713	718	820	830	843
Enforcement	4	3	12	10	2
Plan Review	44	84	154	180	111
<b>Total*</b>	<b>1,771</b>	<b>1,934</b>	<b>2,401</b>	<b>2,443</b>	<b>2,236</b>
<b>Licensing</b>					
Camps	772	774	801	811	840
Units	3,836	3,944	4,147	4,046	4,278
Capacity	23,583	24,100	24,862	25,054	26,166

\* Inspections cover multiple components of camp operation. The total is less than the sum of the individual components

Camps	772	774	801	811	840
Units	3,836	3,944	4,147	4,046	4,278
Capacity	23,583	24,100	24,862	25,054	26,166

Department of Agriculture & Rural Development  
 retrieved from [https://www.michigan.gov/mda/rd/0,4610,7-125-1569\\_45168--,00.html](https://www.michigan.gov/mda/rd/0,4610,7-125-1569_45168--,00.html)

Enrique  
Andrade

social/cultural/historical context



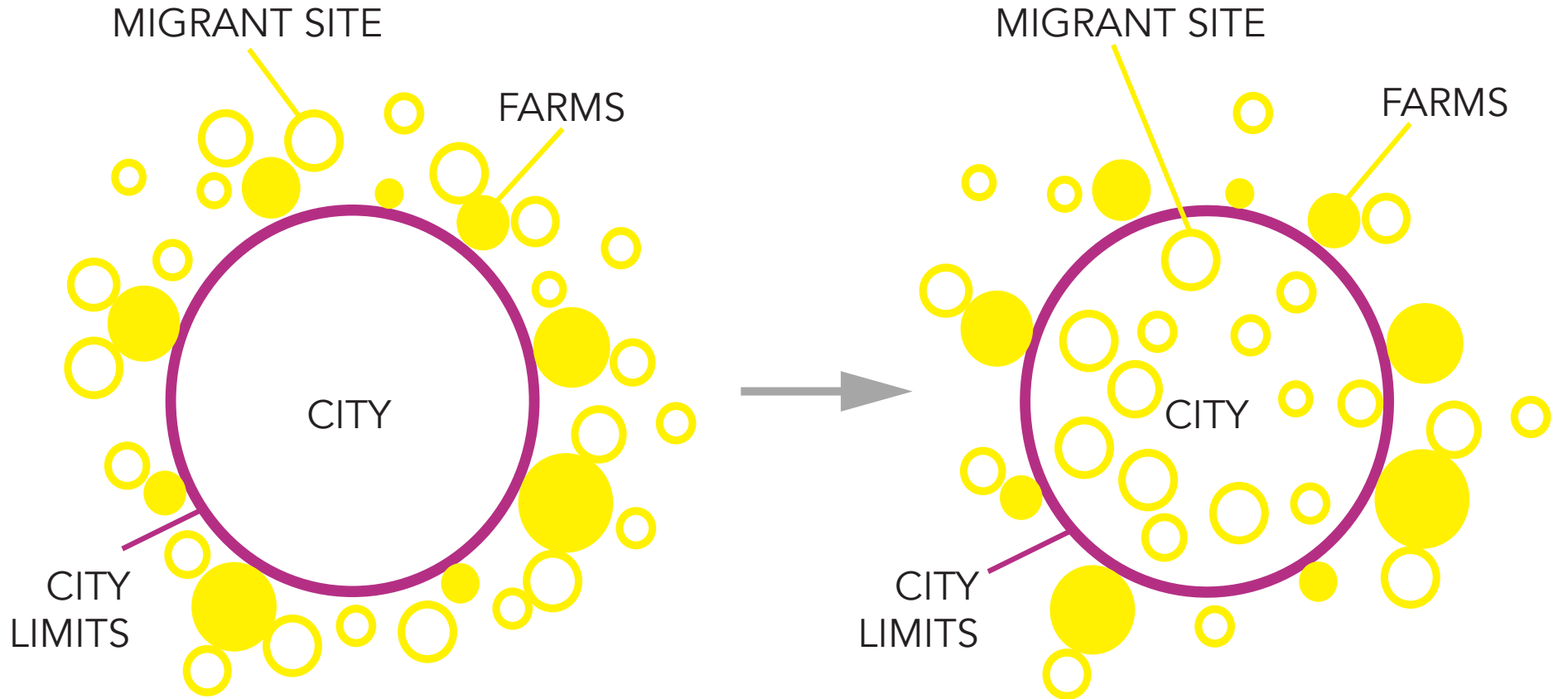
"The dinner table for a migrant worker in Kentucky"  
Elizade Ramirez Vasquez  
retrieved from <https://www.michiganradio.org/post/what-home-looks-migrant-worker>



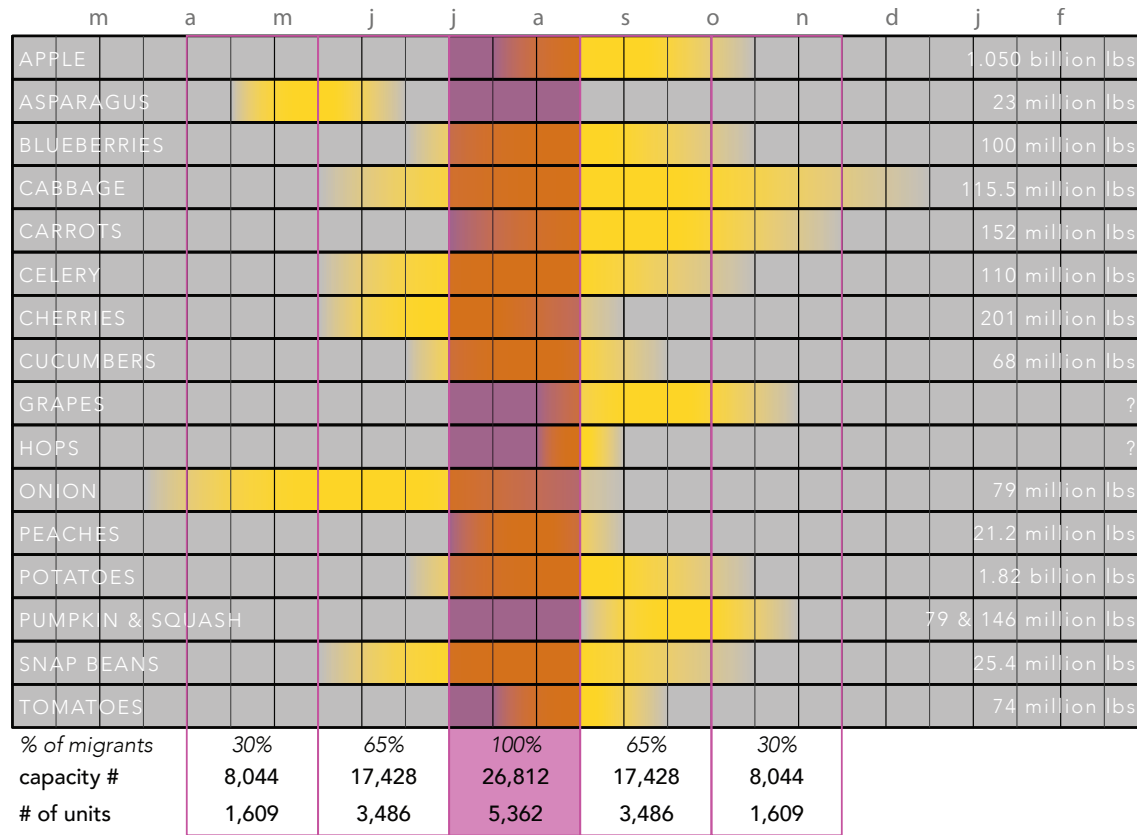
"A migrant camp in southwest Michigan"  
Emily Fox / Michigan Radio  
retrieved from <https://www.michiganradio.org/post/what-home-looks-migrant-worker>



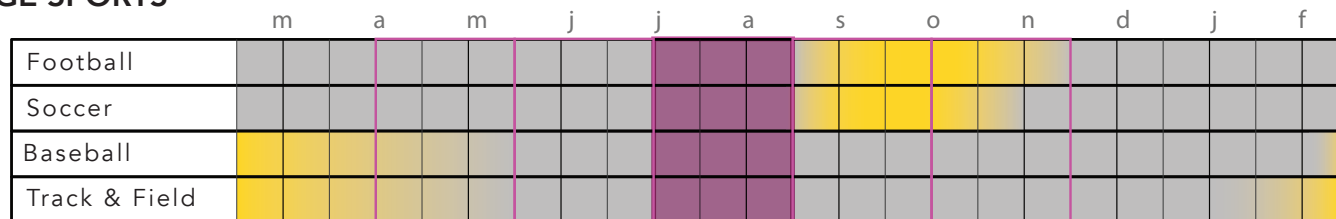
site - new context



## MICHIGAN CROPS



## COLLEGE SPORTS

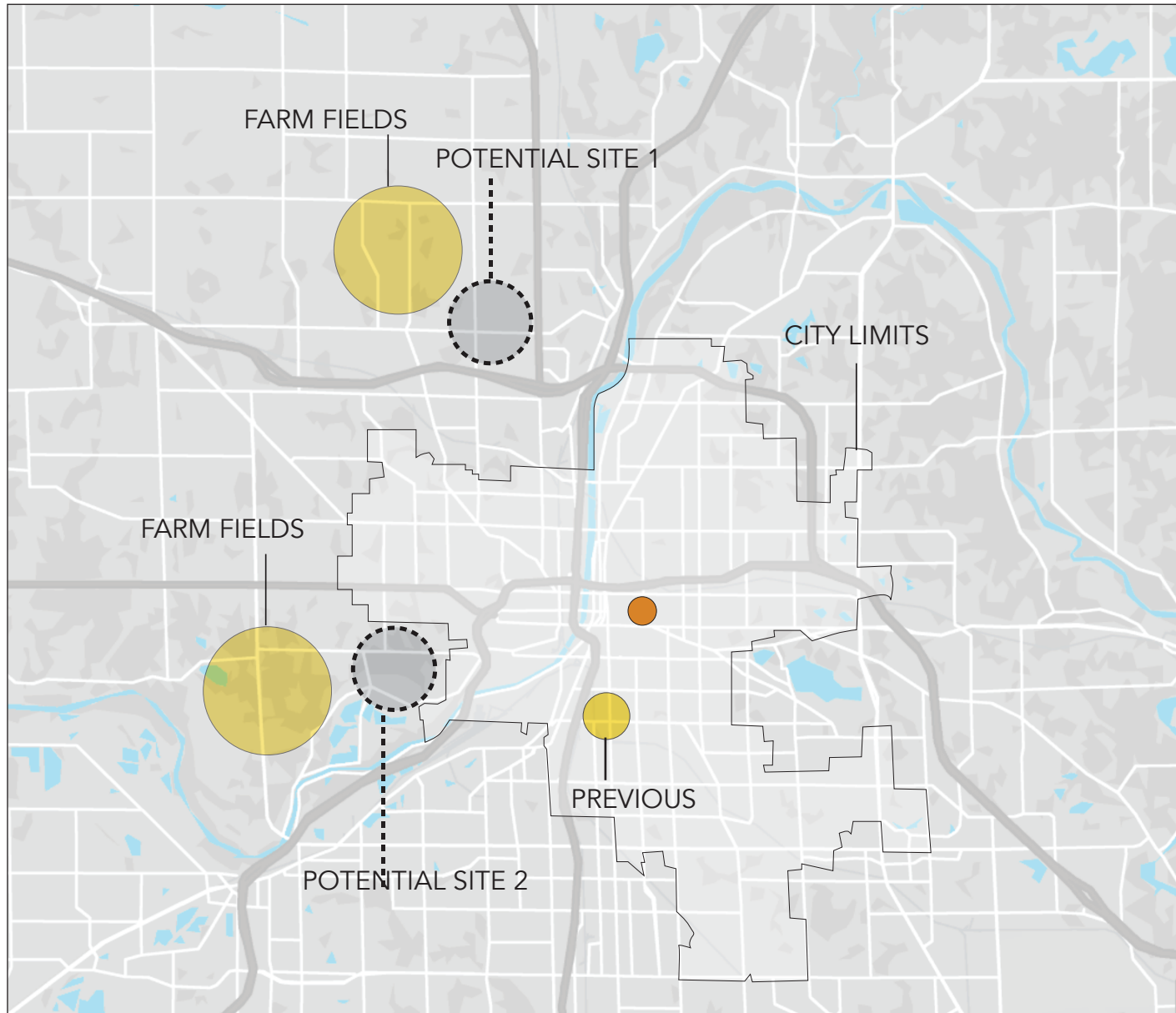


## INTERACTION



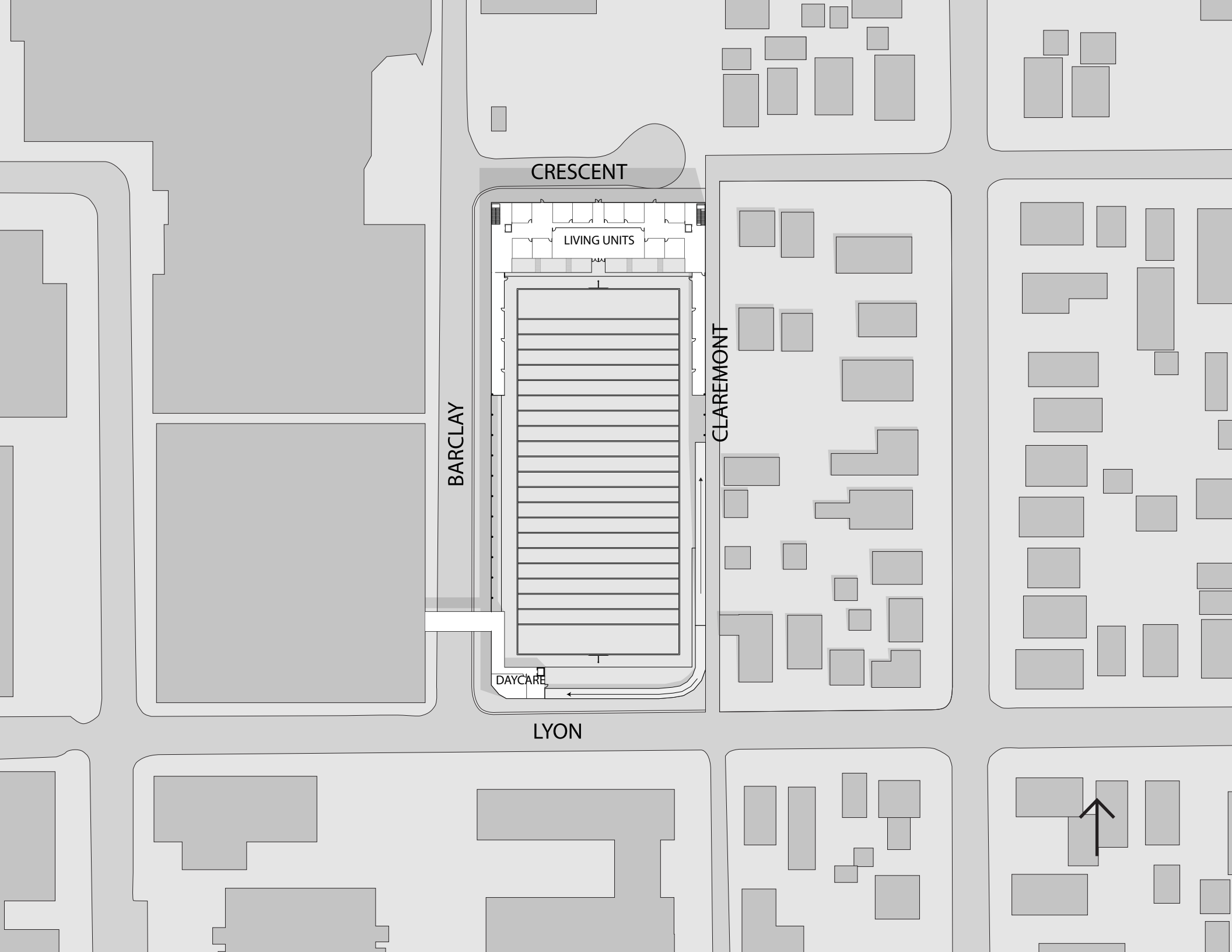
site

## Grand Rapids, MI



site selection matrix

	Site 1 (English Hills Park)			Site 2 (Parks Department)			Site 3 (Plaster Creek Family Park)		
Criteria	Weight	Raw Score	Total score	Weight	Raw Score	Total Score	Weight	Raw Score	Total Score
Access to highway	3	2	6	3	1	3	3	3	9
Proximity to downtown	1	1	1	1	3	3	1	2	2
Public access	2	2	4	2	1	2	2	3	6
Adacency to resident	3	3	9	3	1	3	3	2	6
Tree density	2	2	4	2	1	2	2	3	6
			24			13			29



CRESCENT

LIVING UNITS

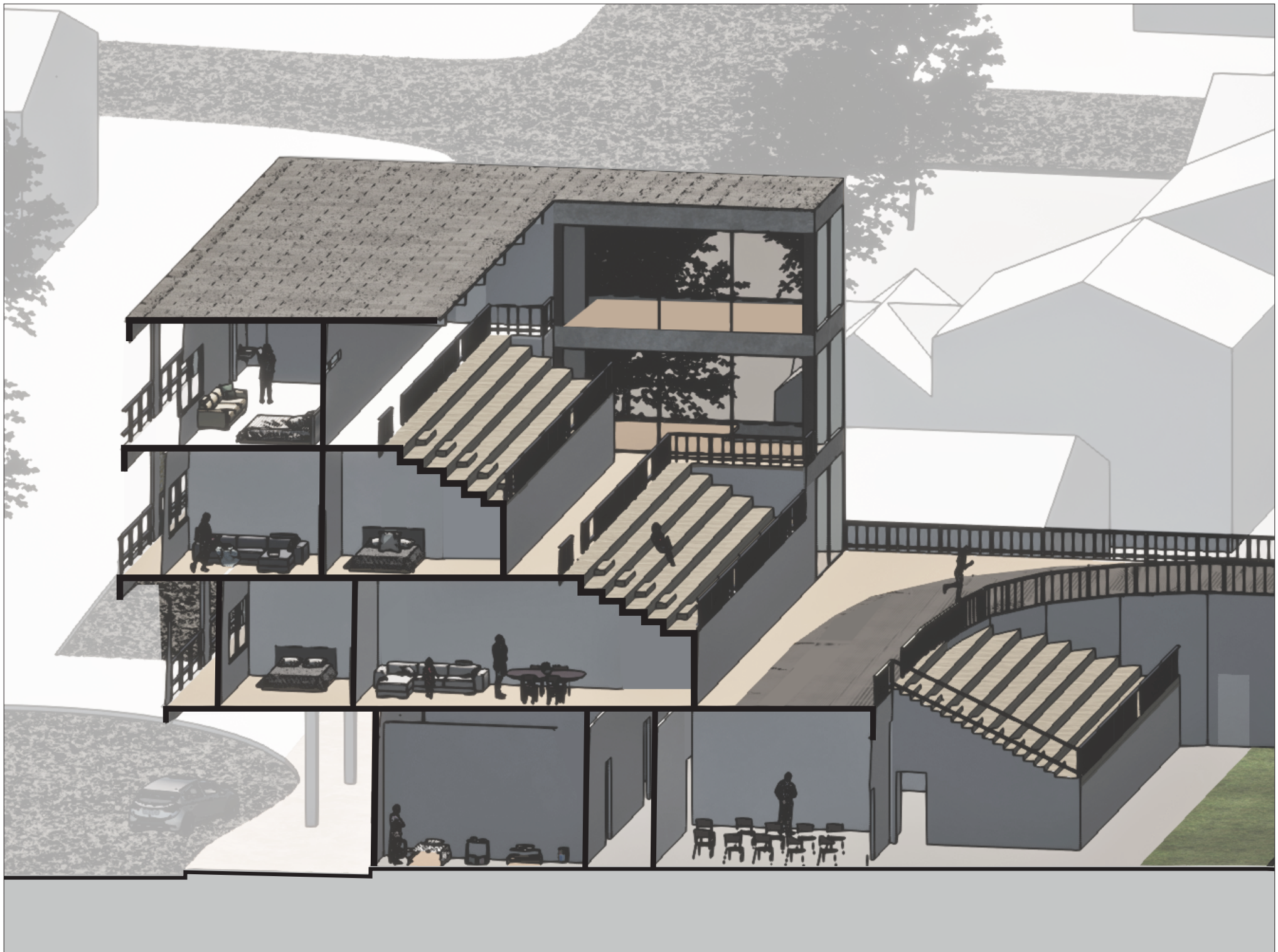
BARCLAY

CLAREMONT

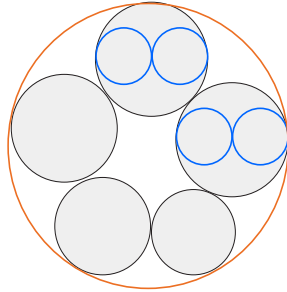
DAYCARE

LYON



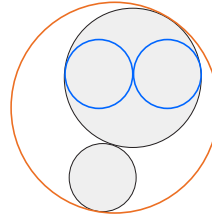


## identifying users



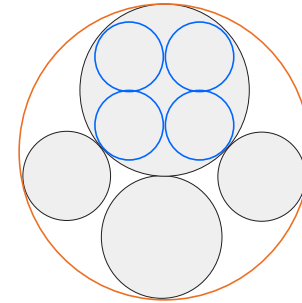
### **Group 1 - Family**

The group has parents and at least one kid. Other family members might be included such as sibling of a parent. For example, a brother or sister of a spouse will be a part of the group. This type of groups travels in one large vehicle.



### **Group 2 - Couple**

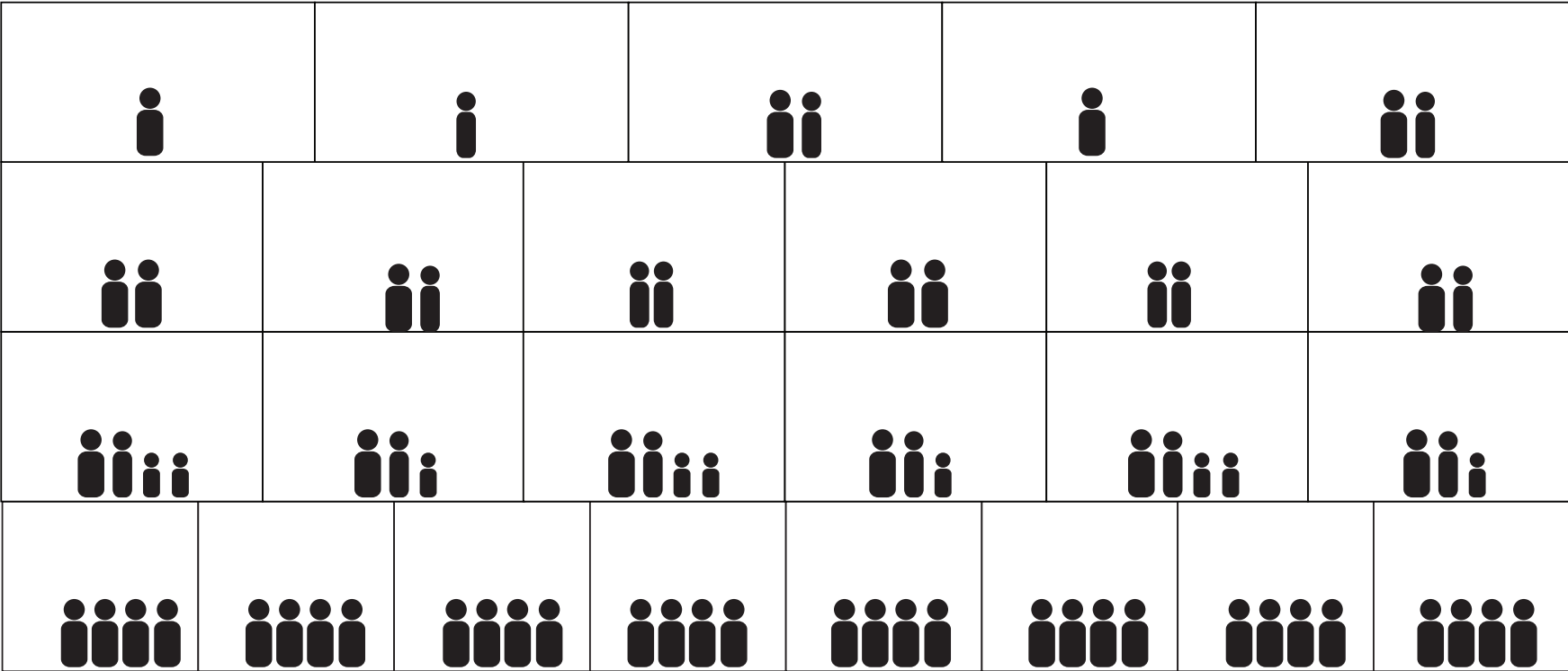
This group consist of married or joint couples. The couple might travel with another couple in a shared vehicle. The couples might travel with a larger group of individuals or couples. A couple with travel in one small to med-size vehicle.



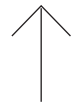
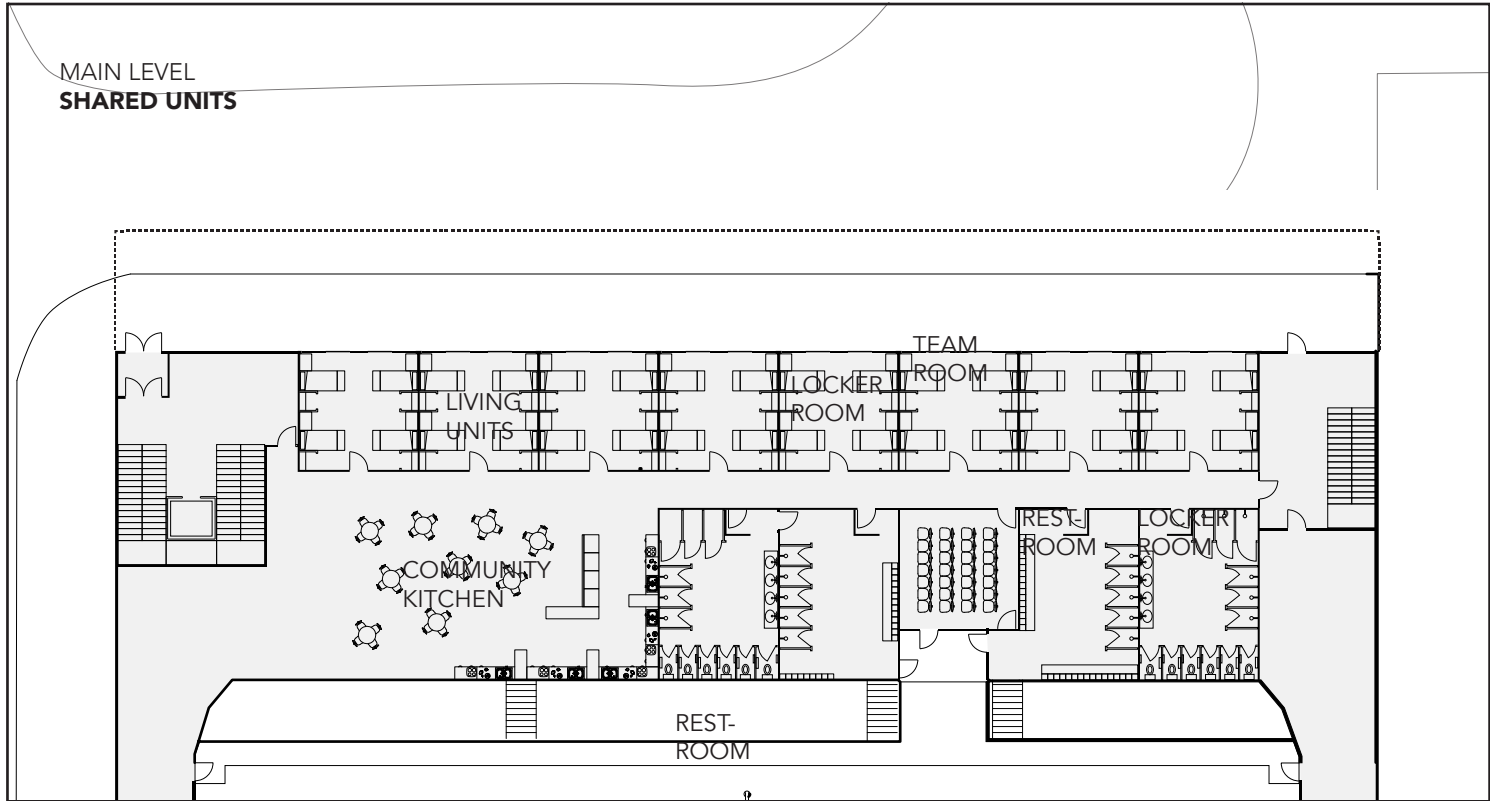
### **Group 3 - Individuals**

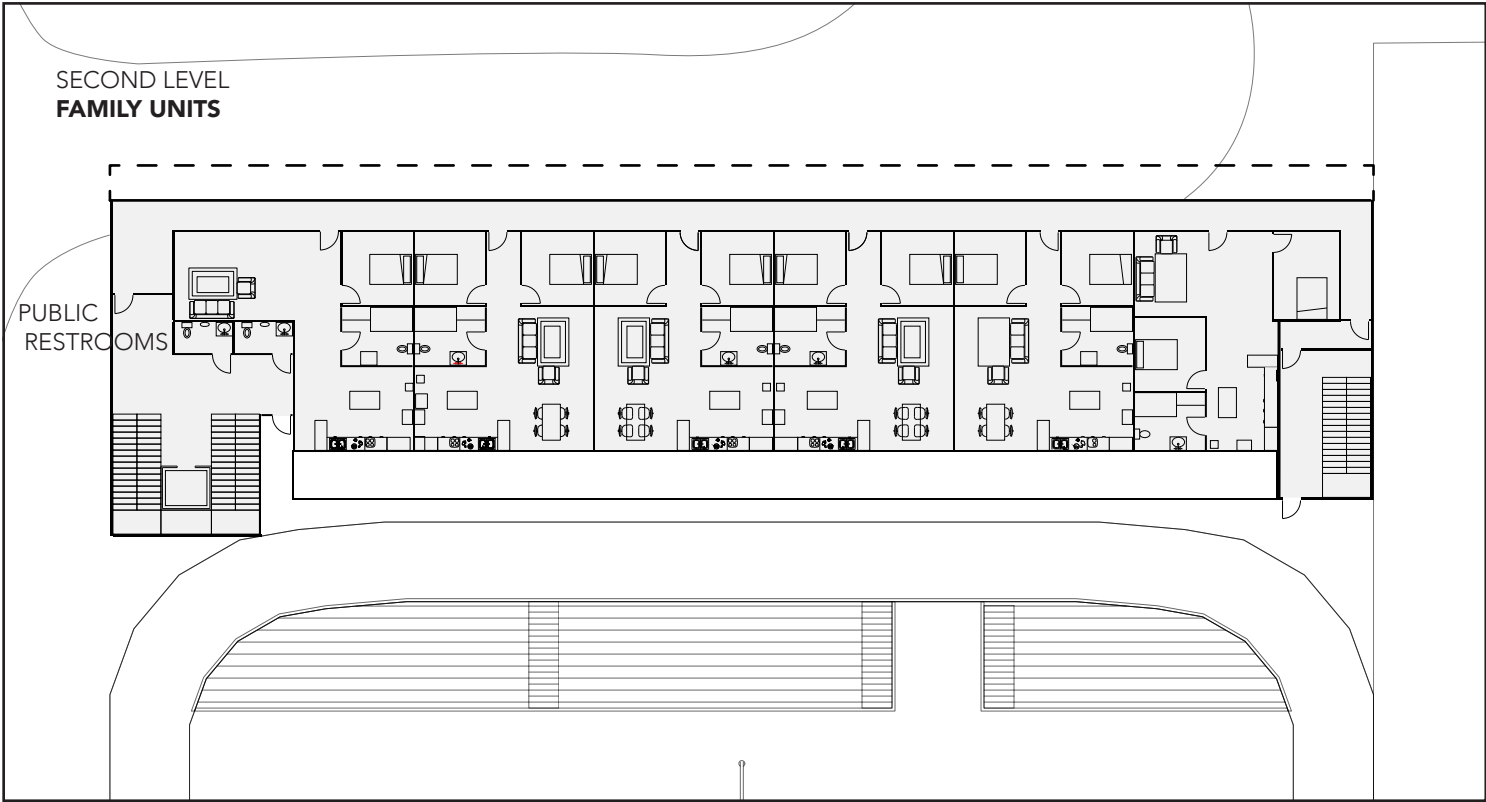
The group is made up of singles who travel separate from their families who will reside in their hometown. The men or women have an established relationship with the members of the group as they might be related or have a long term friendship through family.

Living Units

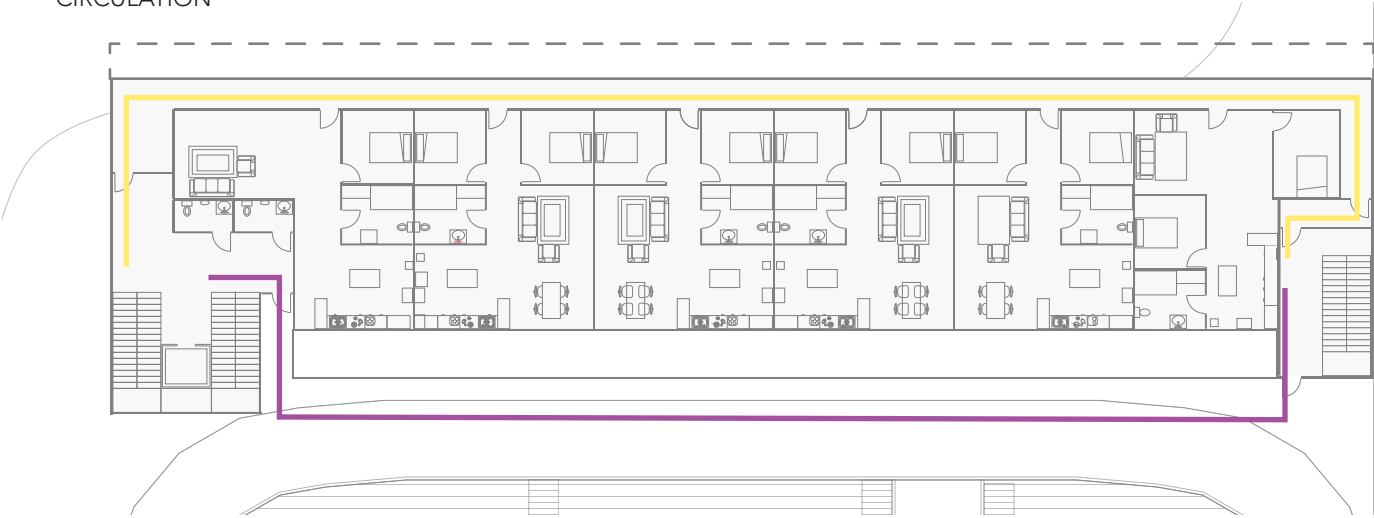




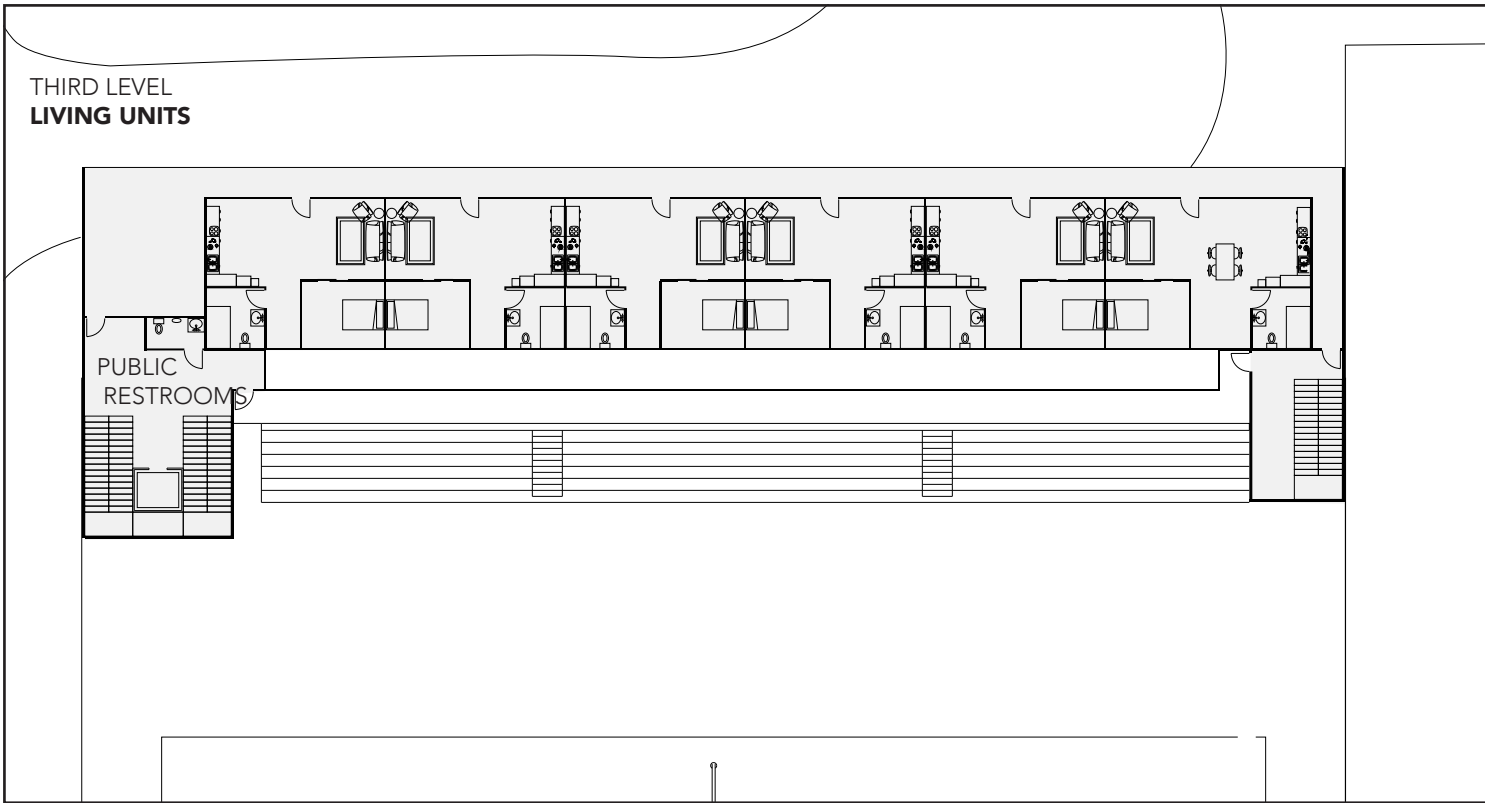




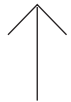
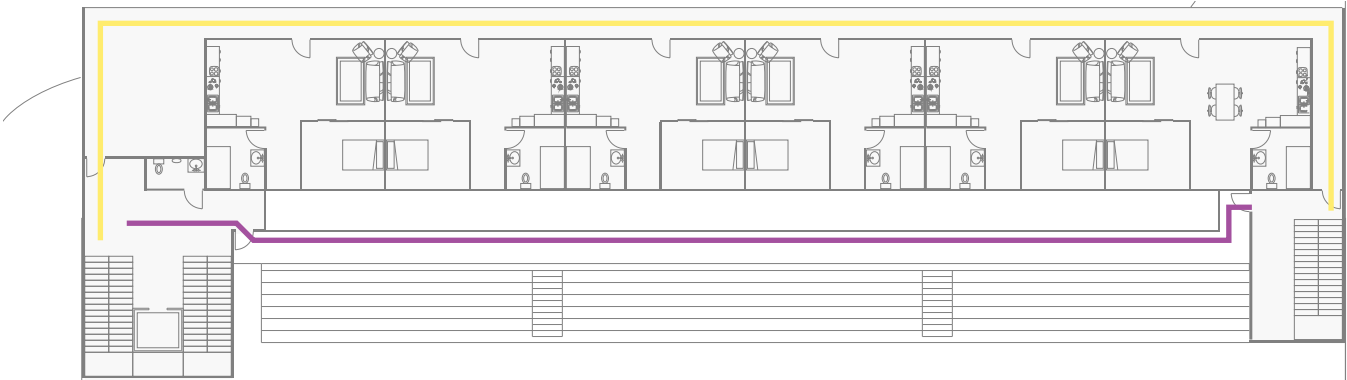
CIRCULATION



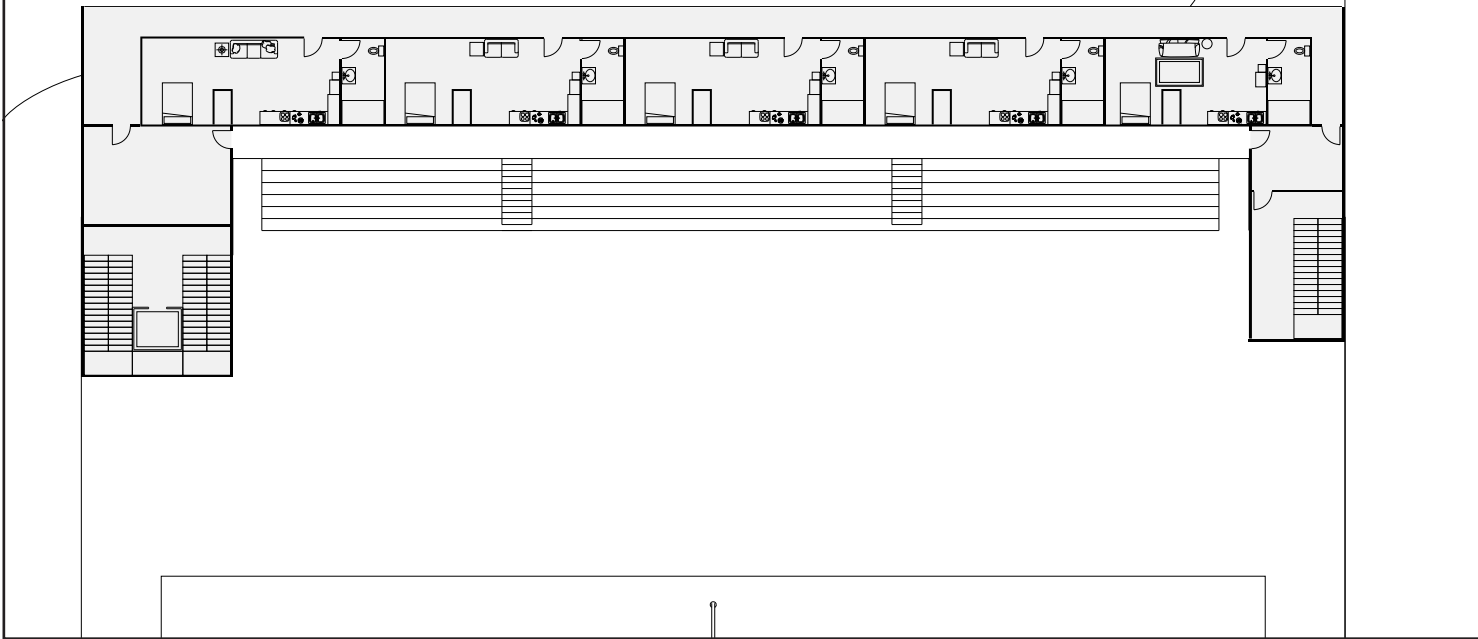
Enrique  
Andrade



CIRCULATION



FOURTH LEVEL  
STUDIO UNITS

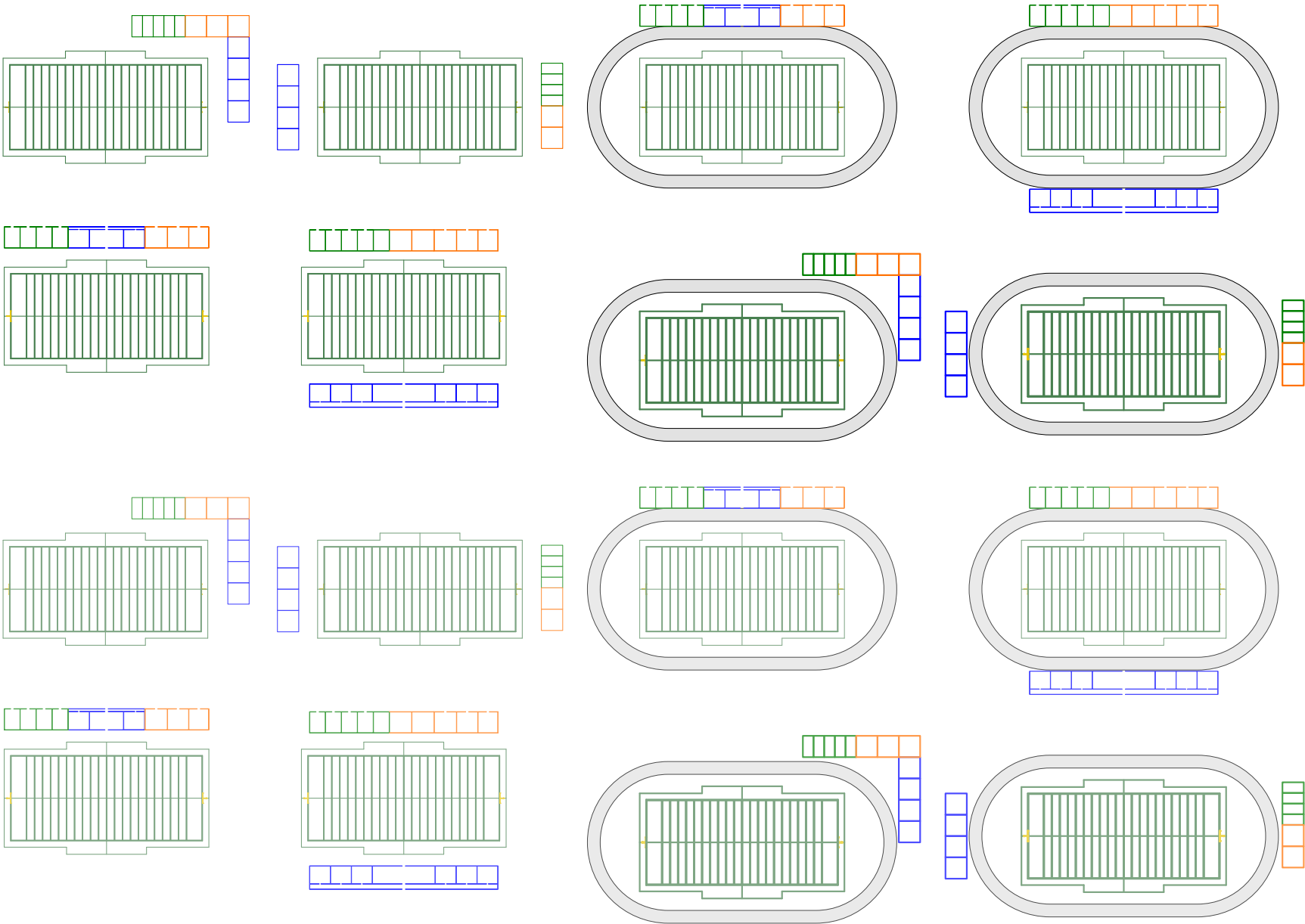


CIRCULATION

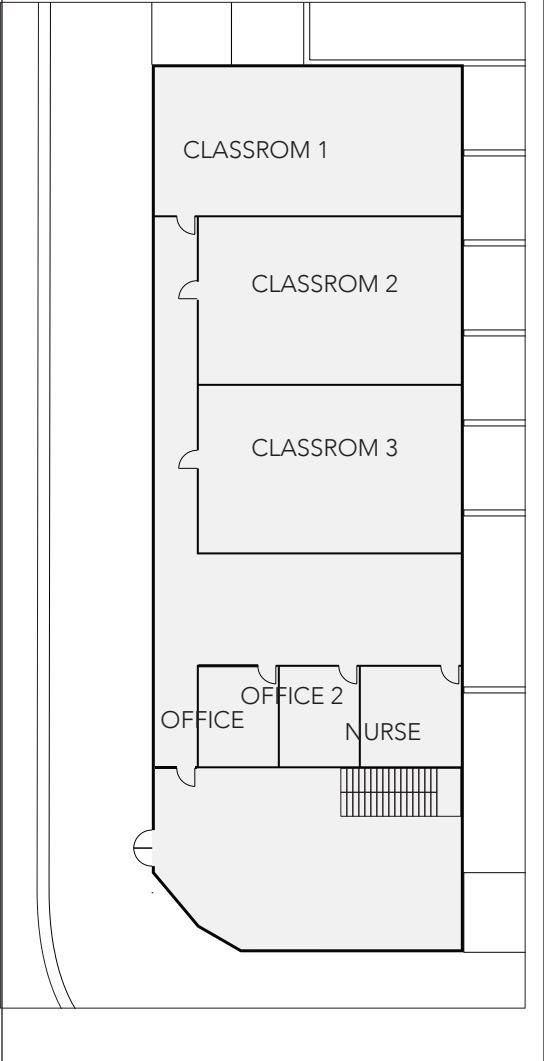


Enrique  
Andrade

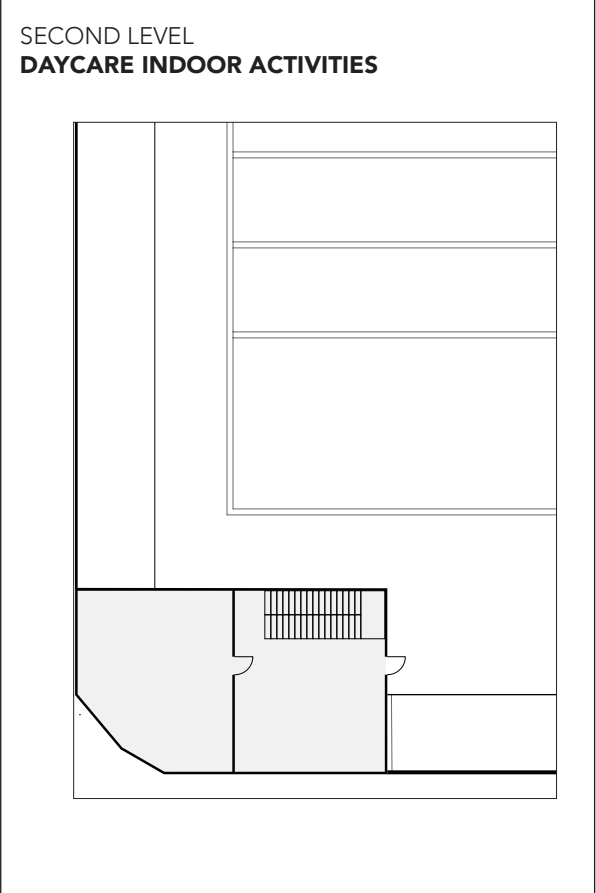
typology



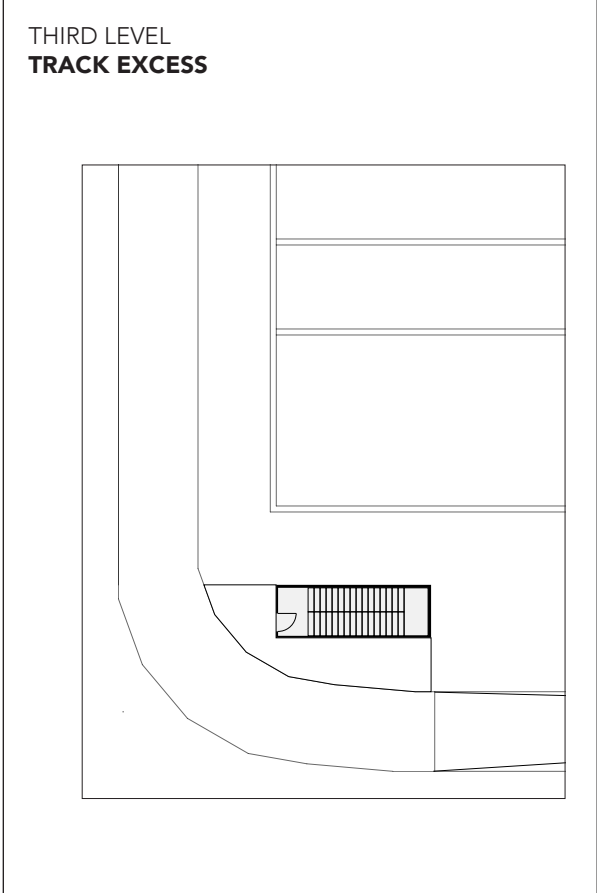
GROUND LEVEL  
**DAYCARE INDOOR ACTIVITIES**



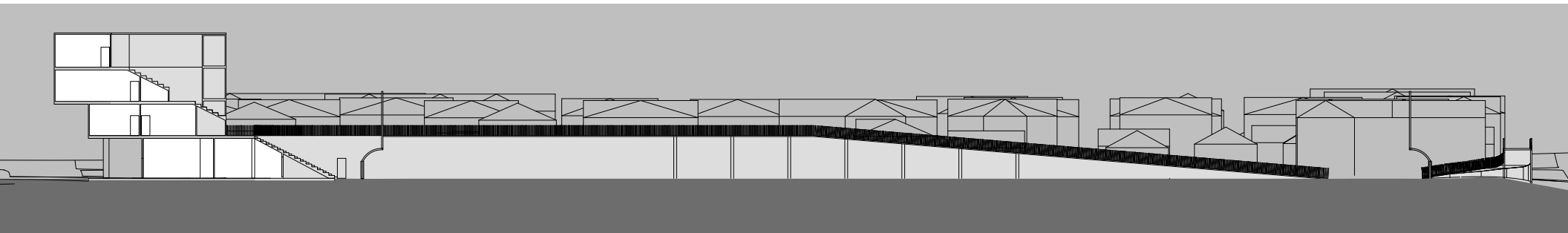
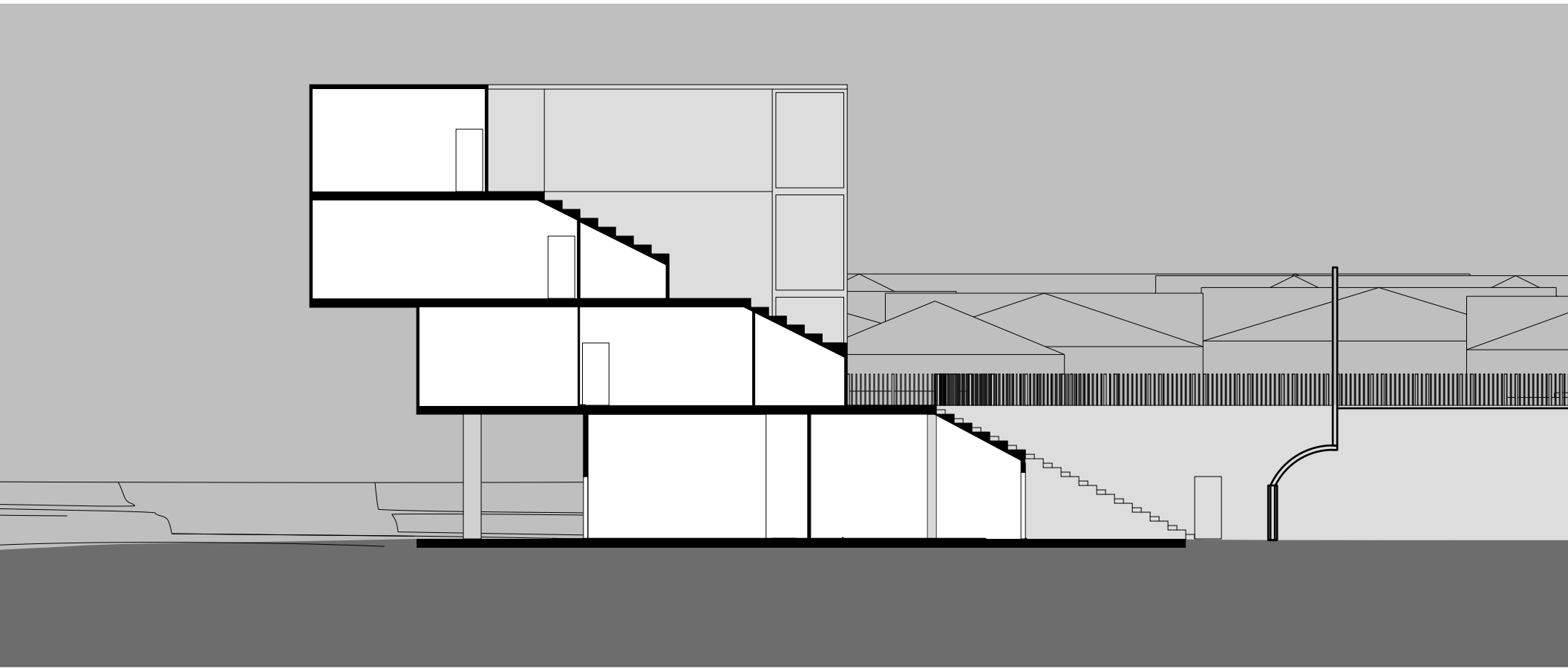
SECOND LEVEL  
**DAYCARE INDOOR ACTIVITIES**



THIRD LEVEL  
**TRACK EXCESS**



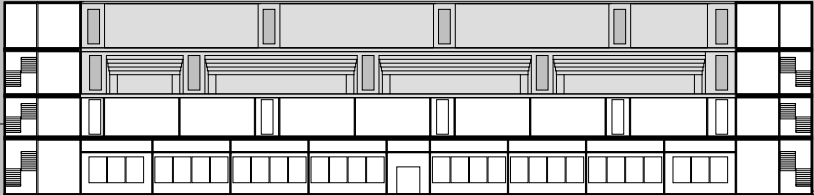
↑  
Enrique  
Andrade



section 2



1" = 32'



1" = 50'



